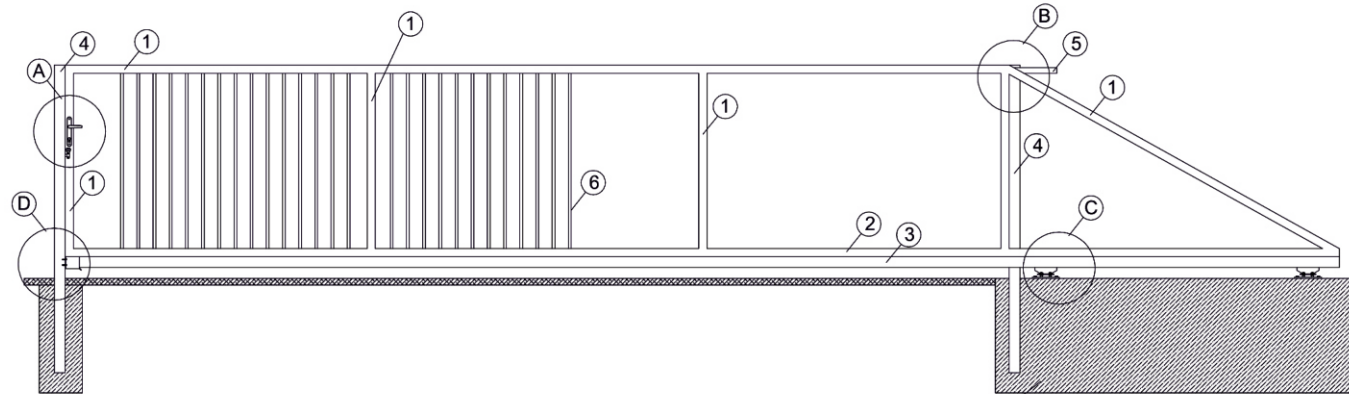
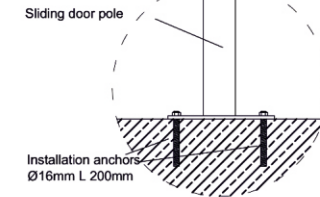


SLIDING DOOR WITH PROFILE INFILL

Drawing of a sliding door with a profile infill - square pipe 20x20x1,5mm

PROFILE	Sliding door max 5000mm (width) x 2000mm (height)
1	Square pipe 60x40x2mm
2	Square pipe 80x80x3mm
3	Running rail 80x80x27x5mm
4	Slide-in / guide pole - square pipe 100x100x3mm
5	Upper guide rail Π 40x40x3mm
6	Square pipe 20x20x1,5mm
A/A1	Hook lock with a handle and a cylinder lock and a set of pick tires
B	Upper guide tire
C	5-tire trolley
D	Slide-in basket

OPTIONALLY Poles mounting on a base leg plate



Gate pole foundation of concrete, class min. B15.
Foundation depth min. 80cm.

